



Expand
Your
Vision



Learning Each Other's Language: Finding Core Strength in Collaboration

Presented by
Marlene Werry
Manager, Economic Development
Agriculture & Rural Affairs
Regional Municipality of Durham



Expand
Your
Vision

AG EDO's Perspective

- Agriculture lens
- Research & strategic planning – keep ahead of the curve
- Operational and implementation
- Identify opportunities
- Communication link
- Opportunities for collaboration



Expand
Your
Vision

Top Five Ideas for Improving Ag Economy

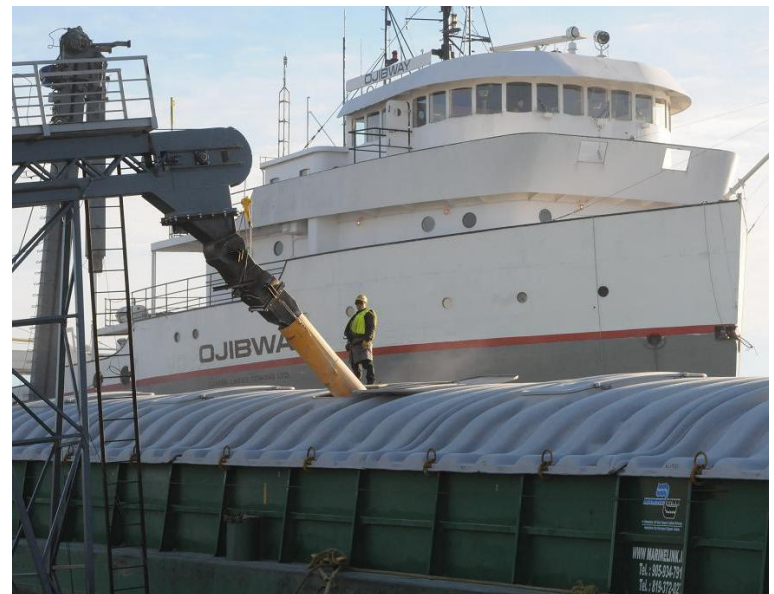
1. Infrastructure
2. Prevent fragmentation
3. Education
4. Consistent interpretation
5. Buffer zones



Expand
Your
Vision

Infrastructure

- Road Construction
- 3-phase hydro capacity
- Broadband for high speed internet access
- Multi-modal transportation routes





Expand
Your
Vision

Prevent Fragmentation

LEAR Study

- LEAR system has two components
- – **Land Evaluation (LE)** – assess the land capability for agriculture (primarily based on the Canada Land Inventory (CLI) methodology but can include climate considerations)
- – **Area Review (AR)** – assess other important factors that affect agricultural activities (e.g., parcel size, fragmentation)



Expand
Your
Vision

LEAR Factors & Weightings

Land Evaluation: 50%

- Soil CLI Rating – 80%
- Climate – 20%

Area Review: 50%

- Parcel Size – 25%
- Fragmentation – 25%
- Presence of Tile Drainage – 25%
- Farm Receipts/Cropped Area – 25%



Agricultural Education

- Agriculture has unique needs
- Farm Tours for policy and decision makers
- Get of the office
- Engage Ag EDO Staff
- One contact person for agricultural projects to include planning & permitting





Expand
Your
Vision

Consistent Interpretation of Policy

- Consistency needed between lower tier municipalities in by-laws, fees
- Value-added agriculture: on-farm processing; agri-tourism Commercial/Industrial Assessement?



Expand
Your
Vision

Buffers

- Buffer areas needed to protect from development
- Buffer areas should come from the development lands
- MDS doesn't apply in development lands and/or for non-livestock operations